

GET STARTED WITH

**JackWind**  
*Class Scheduler*  
*2.0 beta*

JackWind  
2001-DEC  
[jackwind@pmail.ntu.edu.sg](mailto:jackwind@pmail.ntu.edu.sg)

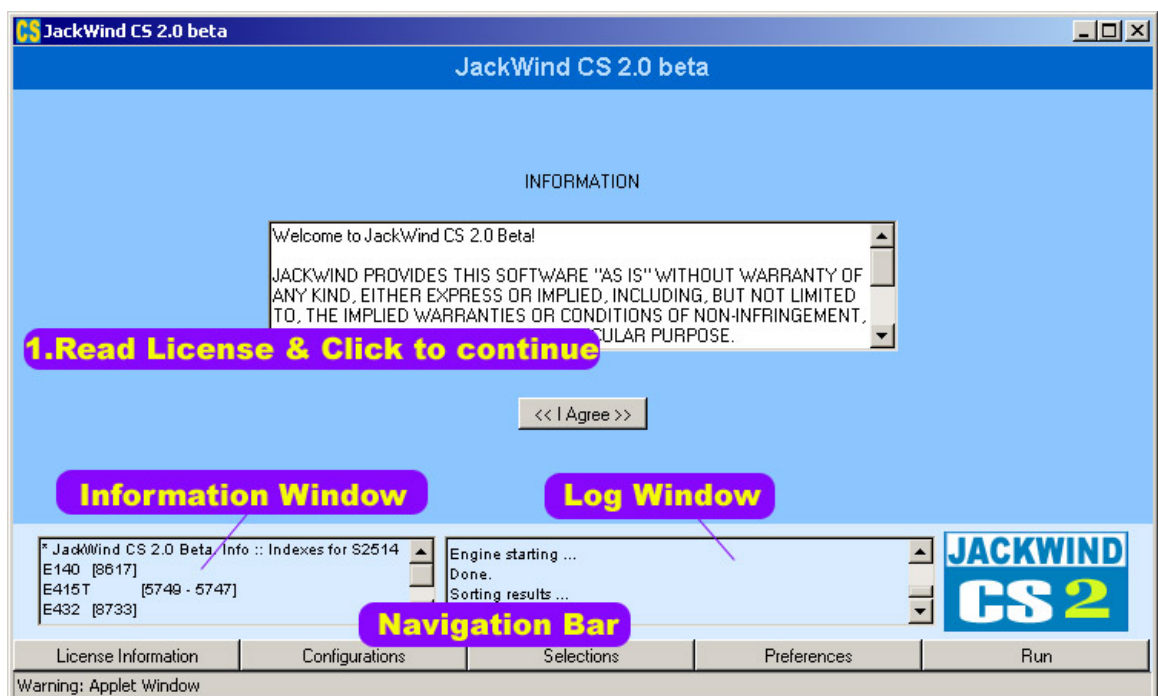
# INTRODUCING CS 2 BETA

CS2 beta was design to help student to register subjects and make good schedule plan. There are two main distributions of CS2, namely application version and applet version. There is no big difference between those distributions. However, application version provide much more powerful feature and customization options.

## GET STARTED

### 1. Launch CS2.

For application version, please refer to readme file; for applet version, you simply click the 'Click Here to Start JackWind CS 2 Beta' button, and the main frame will appear as following:



Please read the license information carefully.

**Note:** There are three commonly used components you need to know.

**Information Window:** When you select or click an item, Information Window will display related information on that if any.

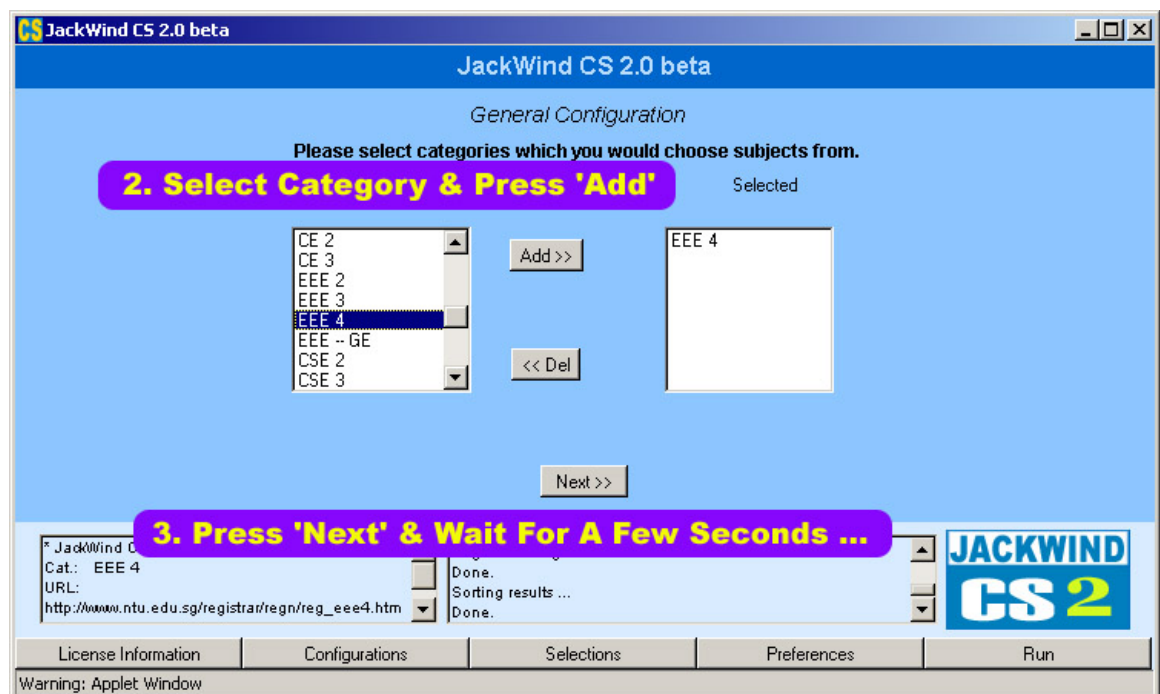
**Log Window:** Help you to track what you have done.

**Navigation Bar:** A control panel to help you switch forward or back.

Now, if you agree the license, please click '<< I Agree >>' to proceed.

## 2. Select Categories

You need specify which categories to select subjects from. For instance, if you are final year EEE students, you may need select 'EEE 4' and then add to Selected Categories. (If you need select subjects from other categories, say, GE, select GE and add).



After you have selected your desired categories, press 'Next >>' to continue. Now,

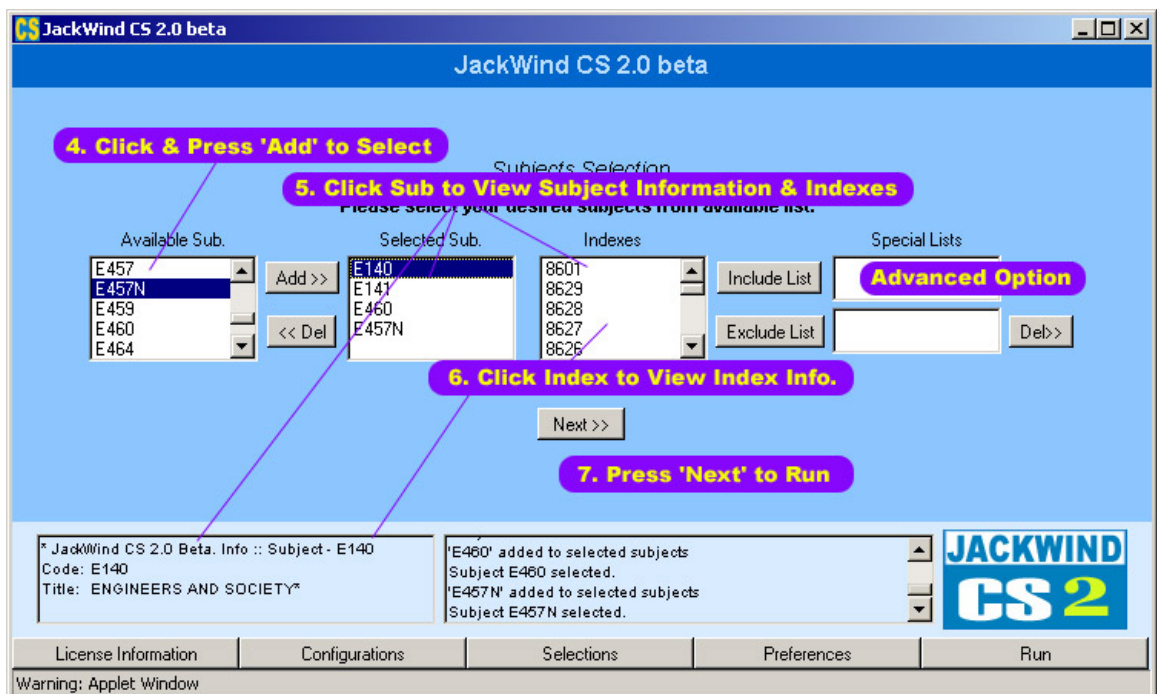
the system will retrieve subject information from NTU web server, which may take a few seconds.

**Tips:** You can view system behavior from the Log Window, the second window at the bottom

### 3. **Select Subjects**

In this step, you need specify which subjects you are going to take. Assume you need to select E457N. Drag the vertical bar of “Available Sub.” (First one in the middle), find E456N, click it, then you will see it is SOFTWARE ENGINEERING from the Information Window(First one at the bottom). Now, press “Add >>”, and you will see E457N has been put into “Selected Sub.”. Click ‘E457N’ in the “Selected Sub.”, you will see E457N’s indexes in “Indexes” box. Click an index, and you are going to see this index’s class information at Information Window.

Select other subjects you need to take. You can press “Next >>” to proceed. If you need specify advanced options, please read on this section.



## **Advanced Options:**

**What should I do if only indexes 8832, 8831 of E457N are available (No vacancy for other indexes)?**

Well, Click E457N in the “Selected Sub.” Select 8832 in “Indexes” box, press “Include List”, and you will see that 8832 has been drop into Include List. Repeat for 8831.

**What should I do if 8835, 8836 of E457N have no vacancy, however, all rest indexes do have enough vacancy?**

Click E457N in the “Selected Sub.”. Select 8836 in “Indexes” box, press “Exclude List”, and you will see that 8836 has been put into Exclude List. Repeat for 8835.

**Note:** You can NOT have both of Include List, Exclude List. If you have Include List, system will select indexes from your Include List; If you got Exclude List, then system will select all the indexes of the subject except those in Exclude List. Please understand the mechanism before taking action!

Press “Next >>” to proceed to next station.

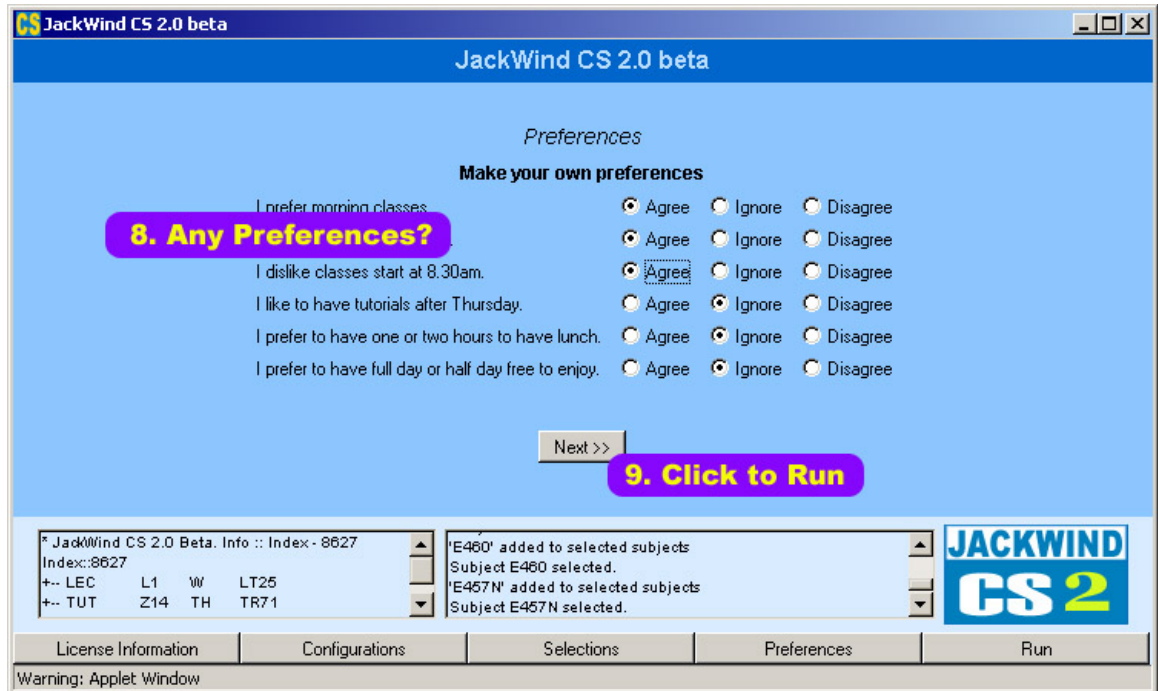
#### **4. Specify your Preferences.**

CS2 has been designed to be highly personalizable. You can specify your preferences in the stage. Click the radio to express your selection. Note: If you have no preference on certain item, please select “Ignore” rather than “Disagree”, this is very important. eg. “I Prefer Morning Classes”.

“Agree” – Yeah, I prefer morning classes.

”Ignore” – I do not care.

”Disagree” – I prefer to have classes on afternoon.



System will use your preferences to evaluate the solution. The higher the solution fitness point, the more suitable for you.

Click “Next >>” to continue.

## 5. Run It!

After above 4 steps, here comes the exciting part – run and get results. Click “Start” to start generate solutions, and you will see “Engine starting...” in the log window. In most cases, you will see solutions are being generated continuously. Click one solution from the Solution box. You will see its associated timetable displays in the middle, and its subject/index information appears in the information window. After the system generate all possible solutions, the system will sort all solutions according their fitness value in descending order – the first one is the fitness one.

In case that there are too many solutions, you may would like to click “Stop”, then click “SORT” on the top of Solution box to sort the current solutions manually. Select solutions to view. In this case, you can modify your selection or preferences,

then come to click “Start”.

**Warning:** Please DO NOT use ‘Pause’ or ‘Resume’, which may cause serious problems. You can always “Stop”, then click ‘Start’ – The Restart Process.

The screenshot shows the JackWind CS 2.0 beta software interface. At the top, it says "JackWind CS 2.0 beta" and "Score = 142". Below this is a control panel with buttons for START, PAUSE, RESUME, STOP, and BenchMk. There are also "Speed up?" controls and a "RealTime" checkbox. The main area is a timetable grid with columns for time slots (830-1830) and rows for days (Mon-Sat). The timetable contains class entries like E140, E460, E457N, and E141. A "Note: Stop is safe. While Pause & Resume may cause problems." is overlaid on the grid. To the right is a "SORT" dropdown menu with a list of class numbers (CS-1 to CS-14). Below the timetable is a "The Solution Details." section with a text area showing "Thread started. Morning = -1 Cont = -1 830 -1 Tut = 0 Lunch 0 Day = 0". At the bottom, there is a navigation bar with tabs for License Information, Configurations, Selections, Preferences, and Run. A "Warning: Applet Window" is visible at the very bottom.

**10. Click Start to Run!**

**11. Selection Solution to View**

**12. Need Modify Selection? STOP & Click Navigation Bar.**

Note: Stop is safe. While Pause & Resume may cause problems.

The Solution Details.

Thread started.  
Morning = -1 Cont = -1 830 -1 Tut = 0 Lunch 0 Day = 0

Warning: Applet Window

## Note:

For timetable displaying, there is a little bit tricky – suppose we have class from 10.00 – 12.00, then the display will be 9:30 – 11:30. Please pay some attention on this.

If you see something like this: “\* JackWind CS 2.0 Beta. Info :: Indexes for S11 E410 [5439] E144 [5426 - 5425]”, meaning that you can choose either 5426 from E144 or 5425, the results are the same except the venue maybe different.

## Tips:

At any stage, you can always use navigation bar to go back and make changes.

## Warning:

You should Stop the running engine or wait until it completes when you modify configurations, selections or preferences!

## Advanced Option For Application Version

If you launch CS2 from a web page then that CS2 is APPLET version, not applicable to this section.

When CS2 Application Version starts, it will check a file named “categories.txt” to retrieve categories information. If it could not find the file, it will use some default categories settings. You can specify the URL which you view the class schedule from. URL normally like this: [http://www.ntu.edu.sg/registrar/regn/reg\\_eee4S2.htm](http://www.ntu.edu.sg/registrar/regn/reg_eee4S2.htm). If you can not find the category, you simply add an entry to the file “categories.txt”. (Information on this inside the file)

### **Warning:**

When selecting subjects for new semester, you probably need to check whether URLs for your class schedule have been changed or not. if yes, please change URLs in file “categories.txt”.

## Support

Email: [jackwind@pmail.ntu.edu.sg](mailto:jackwind@pmail.ntu.edu.sg)